

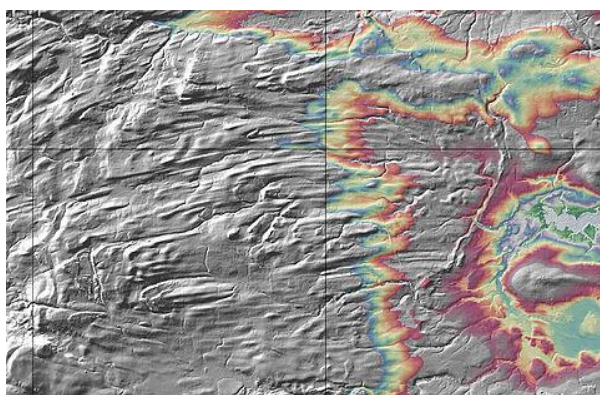
North Eastern Geological Society

Newsletter May, 2017

UPCOMING EVENTS

Sunday May 7th, 2017

Mega-Scale Glacial Lineations in Mid-Northumberland



A joint field meeting with NHSN led by Derek Teasdale

Meet at 10.00 am at Kirkley Hall, Ponteland, Northumberland, NE20 0AQ. The car park is free, and there are a cafe and toilets.

NORTHUMBRIA OUGS FIELD EVENT

Saturday May 6th 2017

Field Skills Training Day: Facies Mapping in the Northumberland Basin with Dr Paul Williams.

Meeting at Cawfields quarry car park, Haltwhistle (GR: NY713666) 10.00 am

The Haltwhistle Burn cuts through a series of limestones, sandstones and shales belonging to the lower part of the Upper Carboniferous

succession typical of the sedimentary infill of the Northumberland Trough. Exposed in Haltwhistle Gorge are a series of sediments deposited in a range of depositional environments. This trip will study and map the varying facies components that make up the Carboniferous succession in Mid-Northumberland.

NEGS members are welcome

NEGS & NORTHUMBRIA OUGS FIELD EVENT

Saturday 20th May 2017

Roseberry Topping & Cliff Rigg Quarry, North Yorkshire.

To explore the Jurassic Rocks of Roseberry Topping and the remains of the Palaeogene Cleveland Dyke at Cliff Rigg Quarry.

Meet at 10.00am at Newton-under-Roseberry Car Park, A173 (£4.50 all day). Toilets available. NZ570128

From the car-park we will follow the footpath through Newton Wood and to the summit of Roseberry Topping from the south-west (215m ascent). We will descend via the path to the east stopping to look at the remains of the jet mines before heading south along Aireyholme Lane towards Cliff Rigg Quarry. We will enter the quarry from the east and walk through it back to the A173, returning along footpath following the road to the car park (or back through Cliff Ridge and Newton Woods if people prefer).

Further Details: Karl Egeland-Eriksen
egeland-eriksen@hotmail.com

Saturday June 17th2017

Whiteadder Water, Lower Carboniferous sediments, Berwickshire, Scottish Borders

Louis Golightley

Details of this field trip will be sent out in May.

Please inform NEGS secretary

negsec@gmail.com

of intention to attend any NEGS field trip.

Do contact Karl at

egeland-eriksen@hotmail.com

if you wish to attend a NOUGS field trip, and he will send you field notes where available.

LECTURE SEASON

From October to March lectures are organised by Professor Gillian Foulger. If you are interested in a specific lecture, speaker or topic, or perhaps can recommend a speaker do let Gillian know at

g.r.foulger@durham.ac.uk

NEWS AND LOCAL EVENTS

It is with sadness that I report the death of member John Almond. John was not a fully active member of NEGS as he was always very busy elsewhere. He could be encountered at the Natural History Society, NEGS occasionally, and he led a walking group where he willingly shared his knowledge of so many things: birds, plants, insects, and sometimes even rocks.

A teacher, his student's tributes were multiple "A lovely gentleman; a great teacher as well as being a kind and genuine person; taking us all on those field trips; he was so dedicated to his pupils; he instilled a love of nature and the great outdoors in so many"

John was 70 on Monday 12th Dec and led a walk on the morning of his birthday with around 24 of his close friends which finished at a local Italian restaurant for lunch. John died from a pulmonary embolism sitting in his chair at home sometime between evening of his birthday and Friday 16th Dec when we found him. Such a terrible shock to everyone. A NEGS member who was in the John's walking group told of such a tremendous loss to so many.

For the second year running a group of members have been supporting Newcastle University first year students in three different fieldwork excursions.

ANNUAL CONFERENCE 2017

Climate past, present and future?
The Geologists' Association Annual Conference 2017

Provisional Programme

Saturday 21st of October
Amgueddfa Genedlaethol Caerdydd - National Museum Cardiff
Cathays Park, Cardiff, South Wales, CF10 3NP

Full days of talks on a range of topics associated with climate and environments

Confirmed speakers to date:
Colin Summerhayes - Earth's Climate Evolution
Ian Fairchild - Snowball Earth
Chris Cleal - The Coal Measures forests

Sunday 22nd October
Range of excursions to include:
The Gower Peninsular
Brecon Beacons

For more information and to register visit:
www.geologistsassociation.org.uk
or email: conference@geologistsassociation.org.uk

Registration opens 1st April 2017

Logos: Geologists' Association, National Museum Cardiff, BGS, Cyfoeth Naturiol Cymru Natural Resources Wales, ELSEVIER

26 Magazine of the Geologists' Association Vol. 16, No.1 2017

NEGS requires a representative to the **GEOLOGISTS ASSOCIATION**, this person needs to be a member of the Geologists Association who will report back from meetings. GA pays some expenses.

2017 FEES WERE DUE AT THE AGM.

Address for cheques: Judy Harrison, 28 St Ann's Quay, 4 St Ann's Street, Newcastle upon Tyne, NE1 2DJ.

For internet banking:

Sort code 09-01-51
Account number 75189803

ADMINISTRATION

Two events have been booked for 2017 **Heritage Open Days**. These are on Thursday 7th September in Newcastle and Friday 8th September in Sunderland.

We will require member support for these events, one or two names have been submitted but more will be required.

Please contact negsec@gmail.com to volunteer to help plan, run, back-mark on these events.

Full Member	£20.00
Unwaged Member, or largely dependent on State Retirement Pension	£10.00
Family member - for persons residing at the same address as a Full Member to which only one copy of mailed items will be sent	£10.00
Postal Member (persons not normally attending meetings).....	£7.00